
BT-Lock

The most aesthetic sliding door lock



Sobinco
OPENS YOUR LIFE

GENERAL CHARACTERISTICS

MINIMALIST DESIGN

BT-Lock or **Bottom & Top Lock** is the most discrete sliding door lock available. By **locking only at the top and bottom**, the vertical frame section remains free of unsightly lock keeps or lock components. The base set reaches vent heights up to 3150 mm and can be extended to 4450 mm. This makes the BT-Lock highly suitable for **architectural applications** in construction projects with large glass windows where **aesthetics** prevail.

USER-FRIENDLINESS

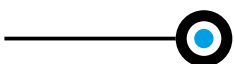
BT-Lock is a simple and compact **cylinder-operated** 2-point lock that fits into most sliding door systems. The door can be opened from inside and outside **without a handle**, with one simple rotary motion of turning the key or knob 360° (rotary force required < 1.5 Nm). An integrated **anti-error mechanism** prevents damage to the locking points when closing the sliding door with considerable force.

SECURITY AGAINST BURGLARY

SKG*** is a standard **feature** of the BT-Lock, in combination with a security finger pull or a closable knob. The firmly anchored clamping plates at the ends of the faceplate provide firm resistance in the event of an attempted break-in. In addition, the BT-Lock has an **anti-lift function** as the minimum clearance between the wedge at the top and the clamping plate of the lock is no more than 2 mm when closed.

EXCELLENT QUALITY

All BT-Lock components are manufactured from **high-quality non-corrosive materials** and have **high corrosion protection, class 4**. This means that the BT-Lock is suitable for all climate zones in Belgium.





TECHNICAL CHARACTERISTICS

SIMPLE CONSTRUCTION

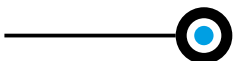
BT-Lock consists of 2 elements:

- a **universal sliding door lock** available in **3 lengths**: 2300 mm, 2700 mm and 3100 mm with **only one backset** of 27 mm.
- a **profile-dependent fixing and keep set** to firmly fix to the vent and frame and to ensure the sliding door closes perfectly. This set is available with or without night vent position. In the set with night vent position the keeps and the thickness pieces are provided with an extra opening.

The fittings are identical for 2-, 3- and 4-part sliding doors.



Fixing and keep set with night vent position



EASY TO INSTALL

The lock is **preassembled** on the faceplate and comes with rods, so both can be **shortened simultaneously** in a single sawing motion.

The lock is fixed to the door leaf with concealed screws. These **fixing screws** are **included** in the set.

The **wedges** are **adjustable by ± 2 mm**, the locking pin has a clearance of 1.5 mm all round.

The door leaf does not have to be removed for repairs. The lock can be easily **replaced after installation**. The rods and locking pins can also be replaced after removing the lock.



EXTENSION

The **extensions of 0.5 m and 1.3 m** are used to reach vent heights from 3150 mm to 3650 mm and from 3650 mm to 4450 mm. It is fully preassembled.

The extension piece should not be shortened. Only the faceplate of the base set can be sawn to size.

The individual **profile-dependent fixing set** must **be ordered separately**.



Fixing sets

OPERATION

The BT-Lock can be operated with a **(security) cylinder**: placed in the space specially milled for this in the section, with a **cylinder ring or cover** or with a **built-in or face-mounted finger pull** from the Edge or Horizon ranges. We offer finger pulls for inside and outside, with or without the cylinder opening. The security cylinders are also available in black.

CYLINDERS



CYLINDER RINGS & CYLINDER COVERS



FINGER PULLS

Horizon

Standard



82180(C)L (VI)
82181(C)L (VI)

82182(C)L (VI)

82090L (VI)
82091(C)L (VI)

82092CL (VI)

6731D



Edge

Sobinox



82780(C)L (VI)
82781(C)L (VI)

82782(C)L (VI)

82690L (VI)
82691(C)L (VI)

82692CL (VI)

82783 (VI)
82784(C) (VI)

82785(C) (VI)
82786(C) (VI)



● ■ ◆ ★ ▲ Possible combinations of finger and door pulls.

DOOR PULLS

Horizon



82116L

Edge



82716L

Standard

6750
6751
6752

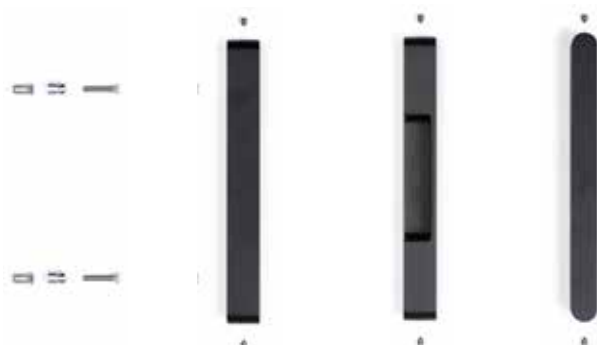
Design door pull with or without grip.



This **modern design** can be used separately or in combination with a knob cylinder or turn knob with square spindle.

It is available in two models: **with and without ergonomic finger grip.**

- The **fixing holes** are **invisible**.
- All **fixings** are **included** in the set.
- The sliding door pull can be finished in **different anodizations and polyester powder-coated in 450 RAL colours.**

74005(VI)
74005-274006(VI)
74006-2

Edge Security door pull with or without cylinder protection.



The Edge Security door pulls are burglar resistant and provided with a **long backplate in solid aluminium** (stainless steel for the version with cylinder protection). The grip is fabricated of stainless steel. The door pulls have a high **corrosion resistance grade 5** (480h) in accordance with the European standard EN1670.



82730(C) (VI)



74023P VI



74022(C) (VI)



74022P VI

Sobinox Security door pull with or without cylinder protection.



The Sobinox door pulls are manufactured from high-grade stainless steel AISI 304 and are supplied in satin finish. They are burglar resistant and provided with **long backplate in solid stainless steel**. The door pulls have a high **corrosion resistance grade 4** (480h) in accordance with the European standard EN1670.

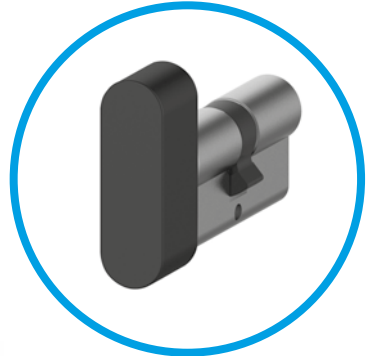
The door pulls are left hand or right hand and are available with or without cylinder hole, for interior or exterior use. The Edge Security door pulls with cylinder protection are only provided on the external side.

KNOB OPERATED CYLINDER

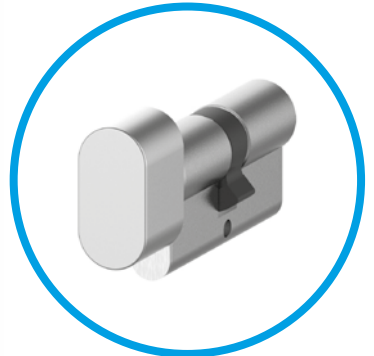
The knob operated cylinder operates the BT-Lock and replaces the key operated cylinder. The knob operated cylinder is designed in line with the minimalist door pull and is available in the same finishes.

The knob operated cylinder is available for the cylinder series:

- standard cylinders 883 and 884.
- security cylinders 963 and 964 (SKG^{***}, half cylinders excepted).
- security cylinders 973, 974, 953 and 954 (SKG^{**}, half cylinders excepted).



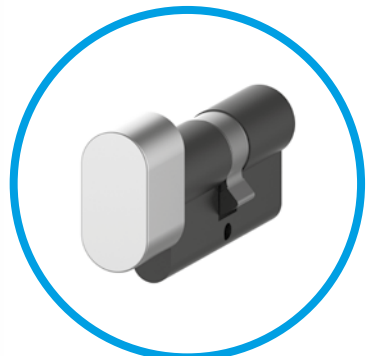
883, 963, 973



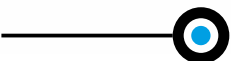
884, 964, 974



953



954



TURN KNOB WITH SQUARE SPINDLE

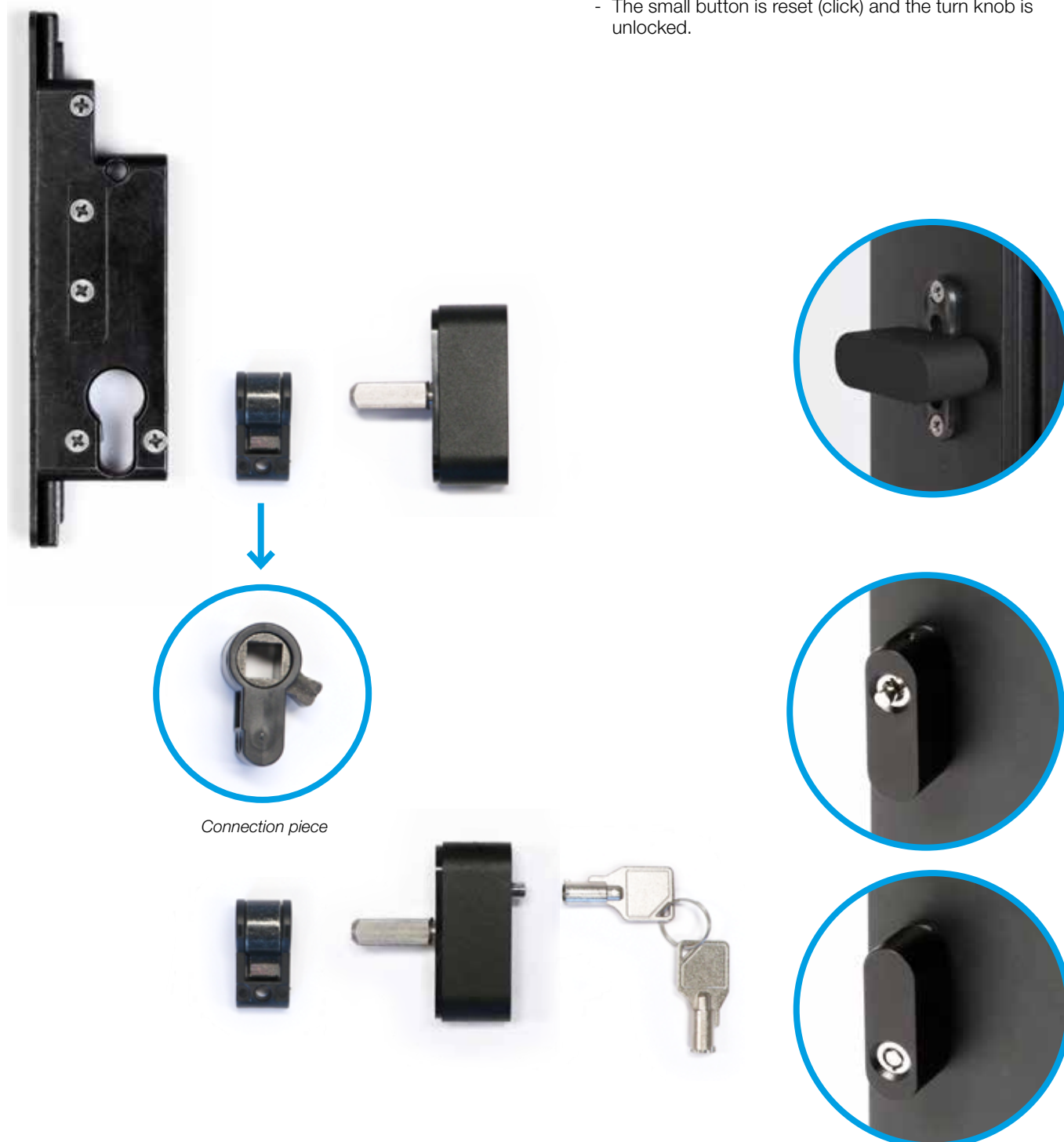
The BT-Lock can also be operated with a turn knob with square spindle instead of a key-operated cylinder or knob cylinder. The turn knob is provided with a square spindle, available in different lengths. The turn knob is designed in line with the minimalist door pull and is available in the same finishes.

The turn knob works as follows:

- pull the knob towards you.
- turn the knob 360°.

The lockable turn knob works as follows:

- Locking:
 - Push the small round button.
- Unlocking:
 - Insert the key.
 - Turn the key approximately 45° (possible in both directions).
 - The small button is reset (click) and the turn knob is unlocked.



ROLLER ASSEMBLIES

DESCRIPTION

Wheel housings for sliding windows fitted with **high-quality wheels**, available in **stainless steel** or **high-quality synthetic material**. These wheels can tolerate **heavy weights** without deforming them. The pre-assembled brushes keep the track clean and **prolong the lifetime**.



CHARACTERISTICS

High-quality synthetic material

Durability	Max. vent weight with 2 carriages	Max. vent weight with 4 carriages
50.000 cycles	250 kg	400 kg
25.000 cycles	300 kg	400 kg

Durability: up to **10x class H3** in conformity with EN13126-15:2019.



Synthetic material

Stainless steel

Durability	Max. vent weight with 2 carriages
10.000 cycli	300 kg

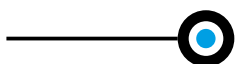
Durability: **class H2** in conformity with EN13126-15:2019.



Stainless steel

ADVANTAGES

- Heavy weights.
- High number of cycles.
- Easy assembly.
- Low-maintenance.
- High quality.
- Prolonged lifetime.





We are Sobinco. We get things done. We specialise in the development and production of innovative locking systems and components for the aluminium windows and doors industry.

At Sobinco **the entire production process takes place under one roof.** In this way we are able to manage and control the value creation chain from start to finish. This gives us **great flexibility** and allows us **to attain sustainable results over the short term.**

Innovation is our passion. Our creativity, expertise and craftsmanship provide a guarantee of added value which translates into **high-quality products, easy assembly, modularity, sustainability and aesthetic comfort.**

Driven by this passion, **our team** at all times endeavours to **improve our current products and develop new ones.** To this end, we listen to the market and to our customers.

We use **high-quality materials** for our product development. These products are **exhaustively tested in line with the strictest of guidelines and quality requirements.** Every product must satisfy these as a minimum and their ratings often exceed the required standards.

We have a **strong customer focus.** Not only in the development of our products, but also in our after-sales support, during the installation process and even long afterwards.

Sobinco is a financially viable and high-tech environment where our specialists can focus on their strengths. With more than 60 years in the business, you can rest assured that we are a reliable partner, ready to seize the opportunity. Nevertheless, we remain approachable. In short, **a family atmosphere, where there is mutual respect** for management, customers, partners and employees.

We are Sobinco. We get things done. We listen. We think in terms of opportunities. We are not afraid to roll up our sleeves.

VAN PARYS FAMILY

PEOPLE

COMPLETE SERVICE

VERTICAL INTEGRATION

Listen. Think. Do.

SUSTAINABLE GROWTH

INNOVATION

TOP QUALITY

FITTINGS FOR ALUMINIUM WINDOWS & DOORS

Waregemstraat 5 - 9870 Zulte - Belgium

T +32 9 388 88 81 - F +32 9 388 88 21

commercial@sobinco.com

www.sobinco.com

Sobinco
OPENS YOUR LIFE