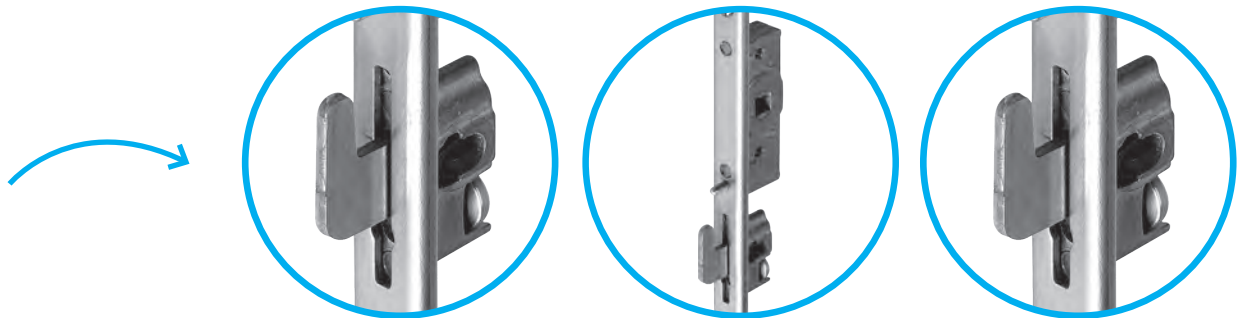

B-Slide

Modular multi-point lock



Sobinco
OPENS YOUR LIFE

MULTI-POINT LOCK & CONTROL



DESCRIPTION

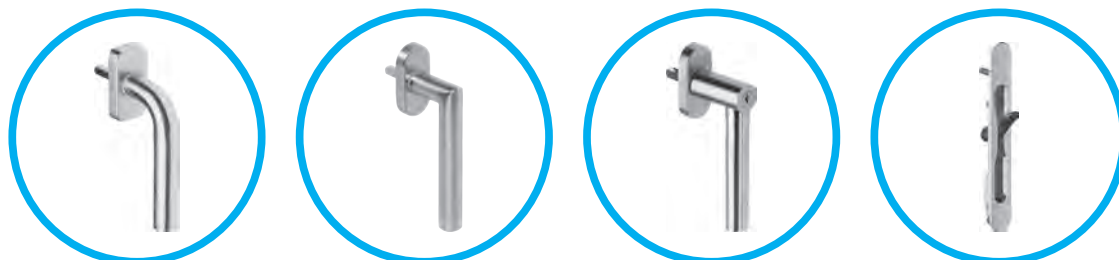
- Multi-point lock for aluminium and PVC sliding doors and sliding windows.
- **Modular:** the central lock is easily expandable to a multi-point lock (3-pointlock and more) with extensions. The central lock and the extensions contain an adjustable hook bolt.
- Opening and closing of the sliding door is by means of a rod, that slides in the face plate causing the hook bolts to move up and down.
- The multipoint lock can be operated by a window handle or a finger pull and can be locked with a profile cylinder.

CHARACTERISTICS

- Manufactured from **high quality materials**. The faceplate, rod, hook bolts and the screws are in stainless steel. The spindle follower is made of brass.
- **Quick and easy installation** with special connections between the central lock and the extensions.
- Lock with square spindle is available with **3 different backsets:** 11.6, 14.1 and 20.6 mm.
- Multi-point lock is available with a U-shaped faceplate of 15.2 mm.
- The **extensions** are available in **2 lengths:** 350 mm and 640 mm.
- **Easy adjustment** of the hook bolts: 4 mm.
- **Anti-fault control:** the hook bolts stay in place in open position.
- **Lockcase support screws:** when using a single handle, adjustable support screws prevent twisting of the lockcase.
- The upward sliding hook bolt prevents the lifting of the vent.
- Guiding pieces enable the hook bolts to slide better in the profile groove and are better protected.

SERVICE

- Locking with standard European cylinder.
- **Window handles:** available in several RAL colours. B-Slide can also be operated with Sobinox handles in stainless steel or Horizon handles.
- **Finger pull:** available in anodised or powder coated in **more than 450 RAL colours.**



ROLLER ASSEMBLIES

DESCRIPTION

Wheel housings for sliding windows fitted with **high-quality wheels**, available in **stainless steel** or **high-quality synthetic material**. These wheels can tolerate **heavy weights** without deforming them. The pre-assembled brushes keep the track clean and **prolong the lifetime**.

CHARACTERISTICS

High-quality synthetic material

Durability	Max. vent weight with 2 carriages	Max. vent weight with 4 carriages
50.000 cycles	250 kg	400 kg
25.000 cycles	300 kg	400 kg

Durability: up to **10x class H3** in conformity with EN13126-15:2019.

Stainless steel

Durability	Max. vent weight with 2 carriages
10.000 cycli	300 kg

Durability: **class H2** in conformity with EN13126-15:2019.

ADVANTAGES

- Heavy weights.
- High number of cycles.
- Easy assembly.
- Low-maintenance.
- High quality.
- Prolonged lifetime.



Synthetic material



Stainless steel



We are Sobinco. We get things done. We specialise in the development and production of innovative locking systems and components for the aluminium windows and doors industry.

At Sobinco **the entire production process takes place under one roof.** In this way we are able to manage and control the value creation chain from start to finish. This gives us **great flexibility** and allows us **to attain sustainable results over the short term.**

Innovation is our passion. Our creativity, expertise and craftsmanship provide a guarantee of added value which translates into **high-quality products, easy assembly, modularity, sustainability and aesthetic comfort.**

Driven by this passion, **our team** at all times endeavours to **improve our current products and develop new ones.** To this end, we listen to the market and to our customers.

We use **high-quality materials** for our product development. These products are **exhaustively tested in line with the strictest of guidelines and quality requirements.** Every product must satisfy these as a minimum and their ratings often exceed the required standards.

We have a **strong customer focus.** Not only in the development of our products, but also in our after-sales support, during the installation process and even long afterwards.

Sobinco is a financially viable and high-tech environment where our specialists can focus on their strengths. With more than 60 years in the business, you can rest assured that we are a reliable partner, ready to seize the opportunity. Nevertheless, we remain approachable. In short, **a family atmosphere, where there is mutual respect** for management, customers, partners and employees.

We are Sobinco. We get things done. We listen. We think in terms of opportunities. We are not afraid to roll up our sleeves.

VAN PARYS FAMILY

PEOPLE

COMPLETE SERVICE

VERTICAL INTEGRATION

Listen. Think. Do.

SUSTAINABLE GROWTH

INNOVATION

TOP QUALITY

FITTINGS FOR ALUMINIUM WINDOWS & DOORS

Waregemstraat 5 - 9870 Zulte - Belgium

T +32 9 388 88 81 - F +32 9 388 88 21

commercial@sobinco.com

www.sobinco.com

Sobinco
OPENS YOUR LIFE